



Technical production support



interco[®] Tech!

Simple. Better. Performing.

interco Tech! is an experienced technical service provider and production partner. It offers industry, trade and private customers a simple opportunity to benefit from high-tech solutions even without their own machinery. The range of services includes systems for water-jet cutting, powder coating, glass bead and dry ice blasting as well as 3D printers and services.



Contents

interco Tech!	High-tech. Competence. Flexibility.	4
<hr/>		
Water-jet cutting	Precise. Diverse. Caring.	6
Powder coating	High quality. Durable. Customized.	7
3D printing	Simple. Fast. Economical.	8
3D scanning and digitizing	Simple. Fast. Digital.	9
CAM milling	Computer-controlled. Precise. Reproducible.	10
CNC milling & turning	Fast. Precise. Customized.	11
Glass bead blasting	Thoroughly. Caring. Cleaning.	12
Dry ice blasting	Effectively. Clean. Environmentally friendly.	13
Paint stripping	Simple. Thorough. Free of residues.	14
TIG and MAG welding	Diverse. Durable. Stable.	15
Sewing	Diverse. Professional. Fast.	16
Construction	Experienced. Precise. Comprehensible.	17
<hr/>		
interco Group!	Solid. Well-functioning. Informal.	18



High-tech. Competence. Flexibility.

We are a reliable, competent and efficient partner for short-term production bottlenecks, for special manufacturing techniques or for one-off and small series production, prototypes and special constructions. Our high-tech machine pool, the dedicated team and many years of experience ensure perfect results including, among others, metal and surface processing, waterjet cutting and 3D processing.

Industry. Trade. Private customers.

We expand the range of services of small and medium-sized companies and offer a variety of possibilities for processing metal, stone, glass, plastic, foam as well as fabrics. In addition, we support our customers in planning and construction according to their needs upon request. Our clientele includes industrial companies, craft businesses and private customers alike.

Our solution

- ▶ High-end machinery resources
- ▶ Many years of experience
- ▶ Flexibility and high performance level
- ▶ Short-term availability
- ▶ High technical competence
- ▶ Ideal for small and medium-sized companies



Water-jet cutting

Precise. Diverse. Caring.

Our high-performance water-jet system operates at 4,000 bar pressure and cuts a wide variety of materials up to a thickness of 170 mm precisely, quickly and with care.

Advantages

- ▶ Excellent cutting edge quality
- ▶ Exact, reproducible cuts
- ▶ Also suitable for complex free-forms
- ▶ No heating, no thermal stress of the workpiece
- ▶ Economical and fast



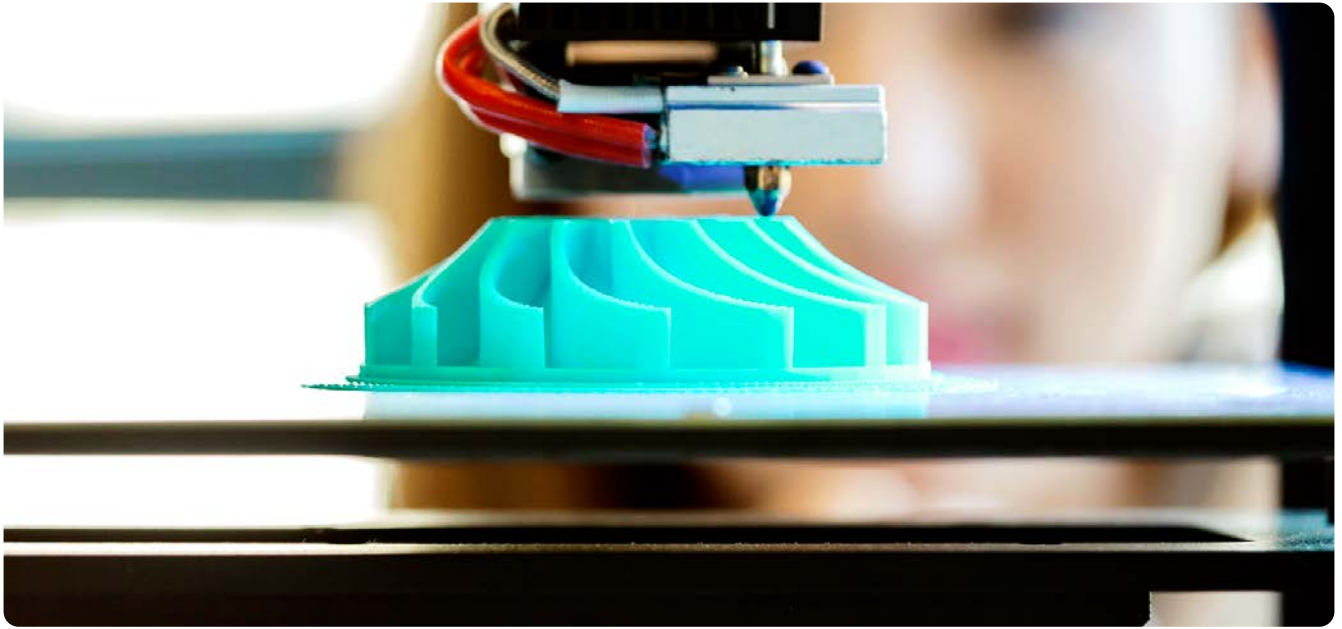
Powder coating

High quality. Durable. Customized.

In order to give surfaces a high quality finish and to protect them from corrosion, we coat them in a wide variety of colors according to customer requirements.

Advantages

- ▶ High quality surface finishing
- ▶ Choice of numerous color options
- ▶ Short processing times
- ▶ Environment-friendly process
- ▶ Long-lasting corrosion protection
- ▶ Use of powder coatings which do not pose a risk to health
- ▶ Dirt-repellent effect for easy cleaning



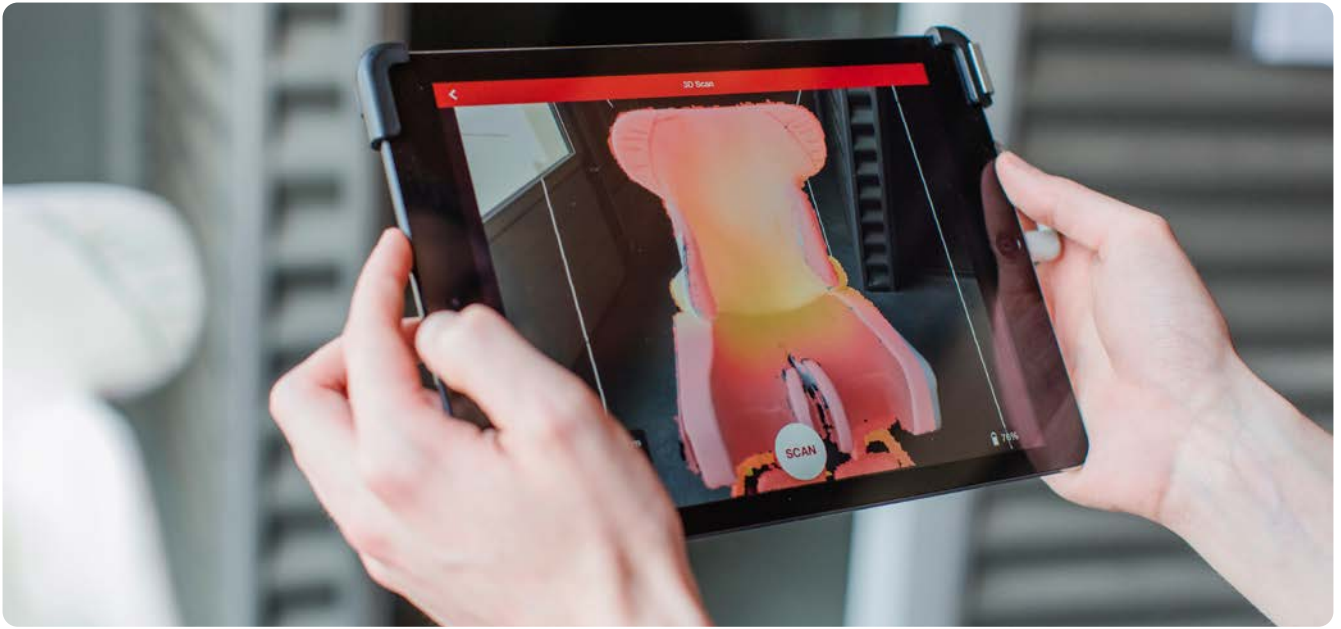
3D printing

Simple. Fast. Economical.

Our 3D printer produces CAD-developed, three-dimensional plastic samples, models and prototypes quickly, accurately and cost-effectively.

Advantages

- ▶ Fast production of samples, models and prototypes
- ▶ Also suitable for complex forms
- ▶ Easy realization from CAD data
- ▶ Accurate and stable results



3D scanning and digitizing

Simple. Fast. Digital.

Our 3D scanners capture and measure complex objects, body parts and shapes with high precision in three dimensions.

Advantages

- ▶ Formats up to room size can be realized
- ▶ High-precision data creation
- ▶ Construction of a 3D model
- ▶ Data transfer to CAD possible
- ▶ Precise acquisition of complex objects



CAM milling

Computer-controlled. Precise. Reproducible.

Our CAM-suited robot with spindle unit is suitable for milling foams, even in complex shapes such as a body impression.

Advantages

- ▶ Precise manufacturing with low tolerances
- ▶ Fast processes, reproducible at any time
- ▶ Ideal for special productions, small series and prototypes
- ▶ Manufacturing according to your technical drawings / data



CNC milling & turning

Fast. Precise. Customized.

Our machine resources include high-precision CAM-compatible CNC milling machines as well as CNC lathes, which we use for the production of prototypes, individual parts and small series.

Advantages

- ▶ Prototypes and one-off pieces
- ▶ Small series and special productions
- ▶ Wheelchair undercarriages and custom accessories
- ▶ Special vehicle parts and vintage car spare parts



Glass bead blasting

Thorough. Caring. Cleaning.

With our glass bead blasting system we clean surfaces and roughen them in preparation for powder coating.

Advantages

- ▶ Elegant, silky matt appearance
- ▶ Gentle on material
- ▶ Suitable for virtually all materials



Dry ice blasting

Efficient. Clean. Environmentally friendly.

We use dry ice blasting to clean, degrease and disinfect a wide variety of surfaces in an environmentally friendly, thorough and material-caring manner.

Advantages

- ▶ Suitable for all materials, sizes and formats
- ▶ Particularly gentle on material
- ▶ Extremely environment-friendly
- ▶ Disinfecting effect on upholstery



Paint stripping

Simple. Thorough. Free of residues.

Metal parts made of non-ferrous metal, aluminum or stainless steel can be easily stripped down to the basic material without leaving any residue.

Advantages

- ▶ Simple, residue-free cleaning
- ▶ Suitable for a wide range of metals
- ▶ Effective recycling



TIG and MAG welding

Diverse. Durable. Stable.

Depending on requirements, we join metal parts reliably and durably with perfect seam appearance using TIG and MAG welding processes.

Advantages

- ▶ Durable and stable connections
- ▶ Optically perfect welding seams
- ▶ Ideal for single pieces, prototypes, small series
- ▶ Experienced welding experts, first-class equipment
- ▶ Programmable TIG welding station with memory for welding programs and workflows



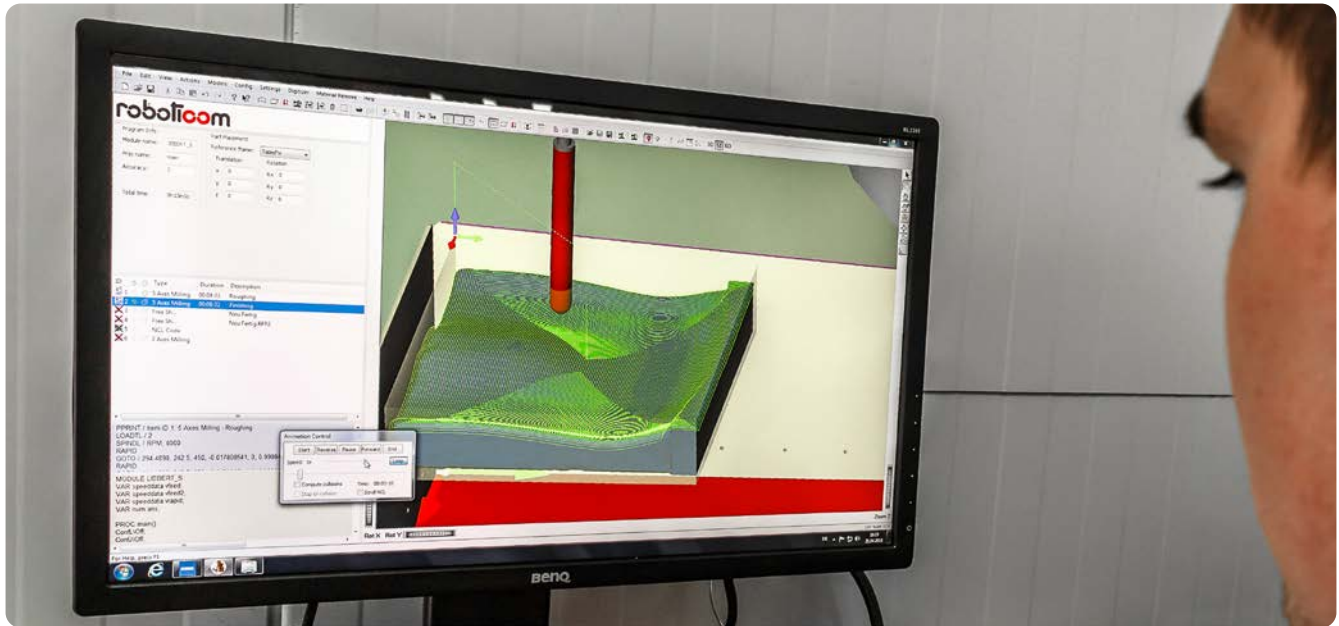
Sewing

Diverse. Professional. Fast.

Experienced seamstresses and an innovative machine pool make our sewing shop the ideal production partner for single pieces, small series and larger production quantities.

Advantages

- ▶ All work steps from a single source
- ▶ Wide range of materials
- ▶ Large parts are also possible
- ▶ Fast realization
- ▶ Many years of experience



Construction

Experienced. Precise. Comprehensible.

We advise you on constructional issues, discuss production possibilities and support you with technical drawings, which we prepare depending on your input from a sketch level.

Advantages

- ▶ Reduces the workload on your own design department
- ▶ For complex construction and drawing tasks
- ▶ High level of technical know-how and creative approach
- ▶ Different file formats

interco® Group!

Open. Honest. Responsible.

The interco Group! bundles the business activities of the interco brands under one umbrella. This ensures consistent customer orientation and compliance with the high quality standards - Made in Germany. At the same time, it is responsible for the development and expansion of the interco team. In this way, the interco Group! creates the basis for long-term partnerships and the commitment to responsible management of the environment and natural resources.

interco® Aktivline!



Dynamic.
Flexible.
Better.

Seat up your Life!

interco® System!



Active.
Passive.
Customized.

Seating and positioning systems

Solid. Well-functioning. Informal.

interco Tech! is part of the interco Group!. The experienced specialist for rehabilitation technology stands for a high level of commitment, clear value orientation and personal reliability.



interco[®]
Shop!



Components.
Custom-made.
Accessories.

Standardized and customized

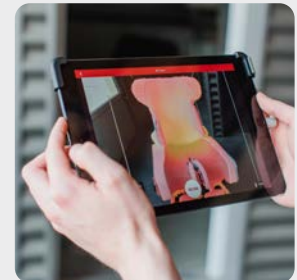
interco[®]
Tech!



Simple.
Better.
Performing.

Technical production support

interco[®]
Brain!



Knowledge.
Conveying.
Ability.

Training and consultancy

interco® Tech!

interco Group GmbH
Im Auel 50
53783 Eitorf
Germany

T. +49 2243 8807-0
F. +49 2243 8807-29
E. info@interco.gmbh
I. www.interco.gmbh

Quality. Competence. Commitment.

interco Tech! is part of the interco Group!. The interco Group! is an international specialist for high quality products and services. These include rehabilitation solutions in the areas of sitting and positioning, technical services and production support as well as training and consulting.

interco® Group!

interco®
Aktivline!

interco®
System!

interco®
Shop!

interco®
Tech!

interco®
Brain!